

AIRCAST®

PodaLib

Dynamic AFO



PodaLib – Dynamic AFO

The new Aircast PodaLib AFO offers a dynamic and functional approach to address muscular weaknesses or foot-lifting muscles deficits, resulting in drop foot. The benefits of the Aircast PodaLib are immediate, allowing the patient to regain a more supple, natural and spontaneous walking pattern, gaining in mobility and confidence.

Dynamic

- Supple textile structure (no hard components) promotes natural ambulation
- No hindering of movements, unlike rigid AFOs
- Allows the patient to have a natural and spontaneous walking pattern

Versatile

- PodaLib is compatible with all shoe styles*
- It can be worn with shoes or barefoot, even while swimming
- It allows patients to enjoy all of their activities without limitations
- Once initial set up done, it serves for all occasions



Corrective Action

- The elastic strap adjusts tension level and foot flexion angle, according to correction required
- Maintaining the foot at a 90° angle helps compensate foot lifting muscles deficits
- Lateral correction is also possible if the deficiency is more pronounced laterally

Comfortable

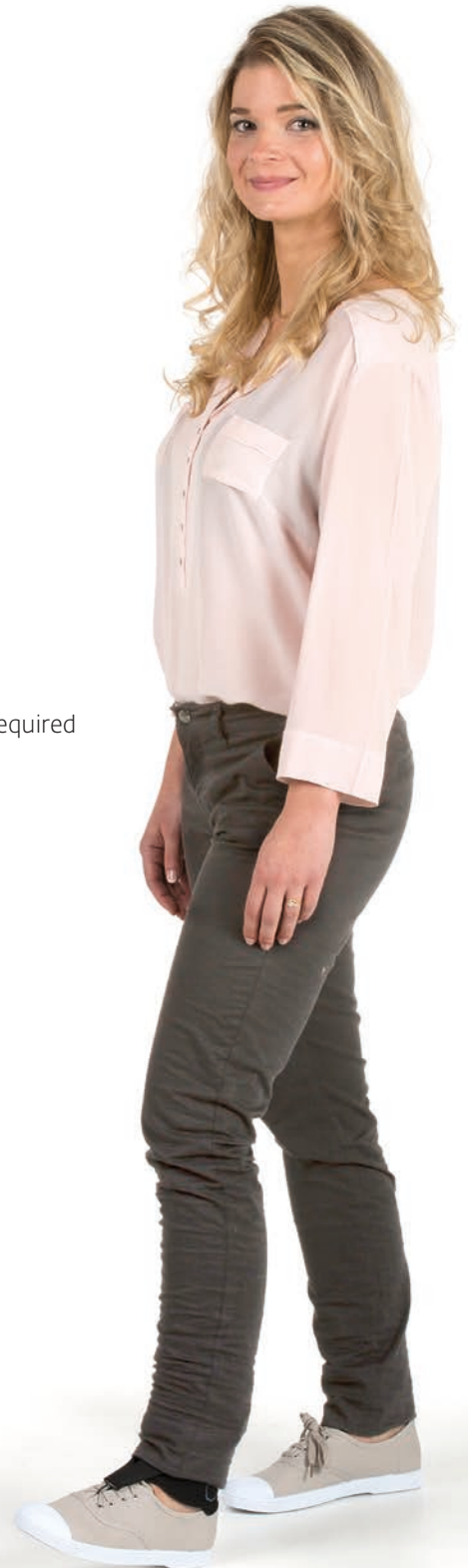
- Breathable, honeycomb textile provides optimal comfort even during long term use
- Adjustable ankle cuff conforms to patient's anatomy
- Posterior foam pad for added protection of the Achilles tendon area

Discreet

- Lightweight, low-profile, the PodaLib AFO can be worn very discreetly under any type of clothing
- Ideal for carrying out daily activities without any constraints

Ease of Application

- Simple and intuitive application
- Can be applied with just one hand (in case of hemiplegia / paralysis for example)



* It is sometimes necessary to call upon a shoe maker/repairer to adapt shoes without attachment points (laces, eyelets, buckles)

Indications

- Neurological weakness or paralysis of the foot-lifting muscles, resulting in drop foot.
- Helps compensate deficits of foot-lifting muscles, and in some cases, deficits of peroneal muscles.
- Helps maintain the foot at 90° angle.
- Helps prevent lateral imbalance, without restricting movements.
- Helps improve ambulation.

Features & Benefits



Closure Buckles

- Help adjust and secure the tension of the elastic straps and foot flexion angle
- Initial adjustment serves for all occasions



Ankle Cuff

- Anatomically shaped, conforms to patient's leg
- 2 posterior supple stays provide ankle support
- Posterior foam pad provides added comfort and protection on Achilles Tendon area



Adjustable Elastic strap

- Double strap with metallic hook
- Helps adjust tension & level of correction required
- Helps maintain foot at 90° angle



Metallic Hook

- Adapts to all shoe types with laces, buckles, eyelets
- Fixes onto foot cuff for barefoot use
- For shoes without an attachment point, can be fixed onto shoe with separate Attachment System (plastic plate & rivet)



Foot Cuff

- For barefoot use or swimming
- Adjustable to forefoot width

Comfortable materials

- Breathable, supple, durable
- Bilateral model
- Available in 4 sizes (including 1 pediatric)
- Delivered with transport/washing net bag

AIRCAST®

ORDERING INFORMATION

| AIRCAST PODALIB | | | | | |
|-----------------|------|---------------------|-------------------|-------------------|--------|
| Part Number | Size | Ankle Circumference | | Ankle Cuff Height | |
| 82-0013-1 | XS | 13-19 cm | 5 1/8" - 7 1/2" | 10 cm | 4" |
| 82-0013-2 | S | 13-20 cm | 5 1/8" - 7 7/8" | 13 cm | 5 1/8" |
| 82-0013-3 | M | 20-27 cm | 7 7/8" - 10 1/2" | 13 cm | 5 1/8" |
| 82-0013-4 | L | 27-34 cm | 10 1/2" - 13 1/2" | 13 cm | 5 1/8" |



MOTION IS MEDICINE®