



Ausklappersseite aussen (207mm x 297mm)

1. Falz bei x = 207mm (= Einklappersseite)

U4 (210mm x 297mm)

2. Falz bei x = 417mm (= Rücken)

# Overview compression arm sleeves

## TRADITIONAL | ADVANCE

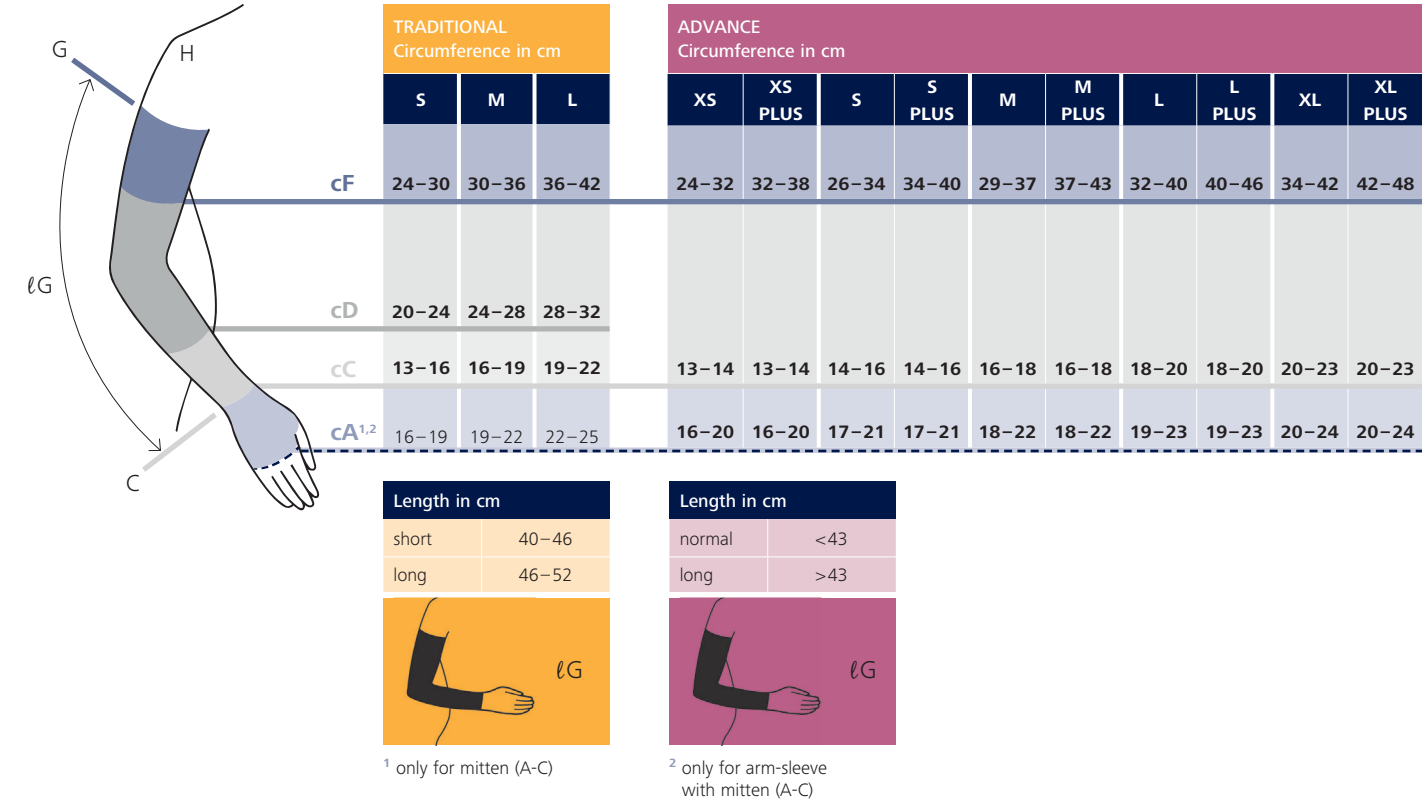
| TRADITIONAL | Hand           | Rim                | CCL | Colours  |
|-------------|----------------|--------------------|-----|----------|
| A - C       | Only mitten    | –                  | 2   | beige 77 |
| C - H       | Without mitten | With support strap | 2   |          |
| C - G       | Without mitten | Knobbed grip top   | 2   |          |
| A - H       | With mitten    | With support strap | 2   | beige 77 |
| A - G       | With mitten    | Knobbed grip top   | 2   |          |

| ADVANCE | Hand           | Rim                | CCL                          | colours        |
|---------|----------------|--------------------|------------------------------|----------------|
| A - G   | With mitten    | Soft top*          | 14 - 18 mmHg<br>20 - 25 mmHg | light beige 17 |
| A - G   | With mitten    | Sensinova grip top |                              |                |
| C - G   | Without mitten | Soft top*          | 14 - 18 mmHg<br>20 - 25 mmHg | light beige 17 |
| C - G   | Without mitten | Sensinova grip top |                              |                |

\* No PLUS Sizes

# Sizing system Circumference / Length

## TRADITIONAL | ADVANCE



**New Zealand**  
USL Medical  
494 Rosebank Road  
Avondale 1026  
Phone: 0800 SIGVARIS (0800 658 814)  
customerservice@uslmedical.co.nz  
www.uslmedical.co.nz

**Australia**  
SIGVARIS (Australia) Pty. Ltd.  
207 Victoria Street  
West Melbourne VIC 3003  
Phone: 1300 SIGVARIS (1300 744 827)  
info.au@sigvaris.com  
www.sigvaris.com.au

SIGVARIS is a registered trademark of SIGVARIS AG, St.Gallen/Switzerland, in many countries worldwide.  
© 2016 Copyright by SIGVARIS AG, St. Gallen/Switzerland

SAU / 08.2016 / V1



SIGVARIS MEDICAL

# Discreet support for carefree daily life

Compression arm sleeves with and without mitten



# Lymphoedema of the arm

## The compression therapy

### What is a lymphoedema?

Lymphoedema is a disease that can significantly limit the quality of life. Lymphoedemas of the upper limbs mainly affect women as this medical condition mostly happens after breast cancer-related removal of axillary lymph nodes. It is a painful disorder and it causes pain and heaviness in the affected limb. Lymphoedemas are said to be unappealing and often are felt to be a huge burden, which can have a negative effect on the patient psychologically.

### Compression therapy

Compression arm sleeves are used to prevent, treat and care for lymphoedemas in the upper limbs. Numerous studies show that compression therapy is an effective treatment for arm lymphoedemas. It was also found that the wearing comfort and aesthetic appearance of the compression sleeve has a great influence on the compliance of the patient and the treatment effect.

# The Development of the ADVANCE arm sleeve

## In cooperation with patients, doctors and nursing staff

Elisha Lund, Ali Bachelor, Adam Withey (Journal of Lymphoedema, 2010, Vol 5, No 2)

The ADVANCE arm sleeve was designed to meet the needs of patients, doctors and nursing staff. The new soft garment can in fact reduce volumes, even in maintained arms. This is possible due to the fact that patients like wearing it and wearing it for longer.

### Results

In the ADVANCE study, the following major criteria in objective measurement of efficacy of compression have been chosen:

#### Excess volume

The excess volume criterion represents a mean reduction in excess volume.

199.4 ml  
(82.7 – 345.5 ml)

- 27 %

135.8 ml  
(57.0 – 209.0 ml)

#### Reduction of excess volume

The reduction of excess volume criterion represents the percentage of arms affected for which such a reduction is observed.

87.5 %  
of arms

# The ADVANCE arm sleeve

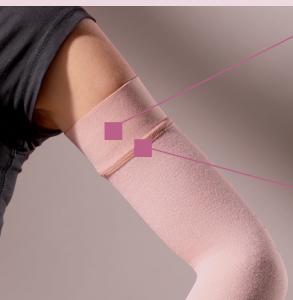
## For even more comfort and additional efficacy

SIGVARIS has applied all of its expertise in choosing materials and in weaving the fabric in order to make ADVANCE an especially effective type of compression garment, which can provide a decisive contribution to the multimodal treatment of lymphoedema. SIGVARIS ADVANCE was designed with and for affected women.



### Innovative Sensinova grip top

In patients with lymphoedema, the upper part of the arm is a sensitive and often painful area whose very fragile skin is easily irritated. The new generation Sensinova grip top has been created and patented (patent number EP 2282650 B1) by SIGVARIS. It is an ADVANCE exclusive feature in compression therapy of the arm.



Effective, it adjusts perfectly to the shape of the arm for optimum support.

Supple, it leaves the skin intact and limits the risk of friction and skin lesions.

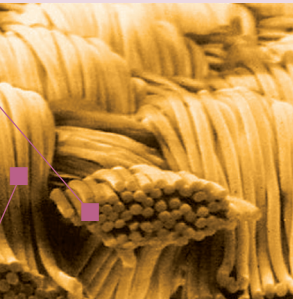
### Fine Sewing

Fine sewing which does not irritate the skin and helps to achieve compliance.



### Thermoregulating modal viscose

Similar to cotton, Modal has an advantage over the latter due to its improved absorption of skin moisture. Thus it provides new thermal comfort which is highly appreciated by wearers of ADVANCE.



### Silver-ion-enriched polyamide microfibre

Apart from its soft texture, this innovative microfibre ensures a natural bacterial balance of the skin and prevents odors and skin irritation.

# The TRADITIONAL arm sleeve

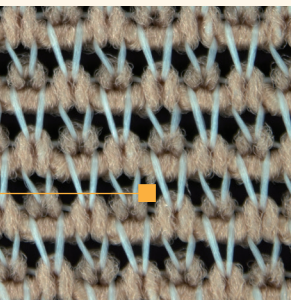
## For the highest medical standards

As an alternative to ADVANCE, SIGVARIS carries an arm sleeve of proven TRADITIONAL quality in the product range. TRADITIONAL is distinguished by the following qualities:



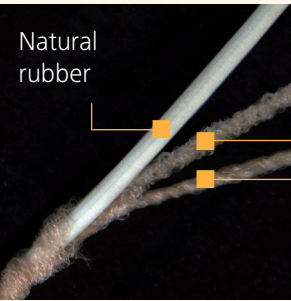
### Excellent breathability

The coarse woven texture of the arm sleeve guarantees excellent air permeability and breathability. As a result, it is also suitable for wearing in warm temperatures (approved by a Swiss materials testing institute <sup>1</sup>).



### Excellent restoring force due to natural rubber

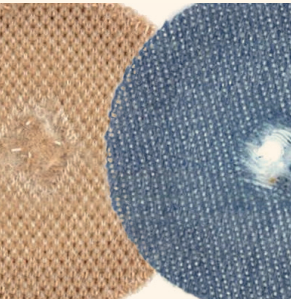
The use of threads containing natural rubber guarantees a maximum restoring force. Unlike synthetic materials, this arm sleeve returns to its original shape after being stretched, resulting in high pressure stability.



Polyamide yarn

### Durable materials

In a direct comparison, wear-and-tear tests (see photo) revealed that the TRADITIONAL stocking is up to six times less susceptible to wear and tear than jeans (\* = less sign of wear).



Jeans

<sup>1</sup> Empa test report no. 458250, sweating torso test, sample 3\_500, 30. June 2011